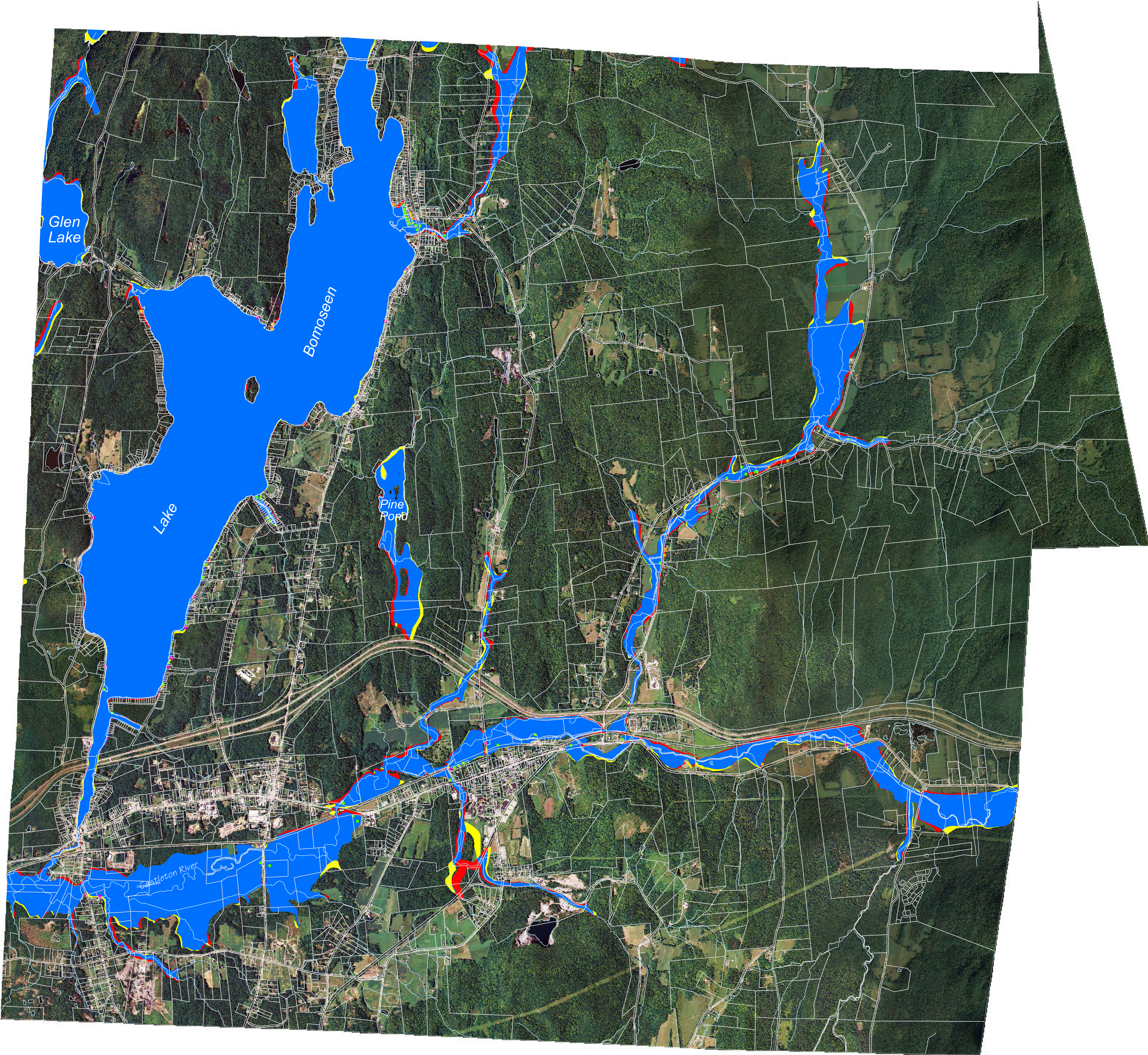


Town of Castleton Vermont Flood Analysis



ABOUT THIS MAP

This map shows flood plain data from the town's new digital flood insurance rate maps. Blue areas did not change. They were in the flood plain in the older version of the FIRM data and remain in the newer version of the DFIRM. Red areas have dropped from the flood plain. They existed in the older FIRM data but are not present in the newer DFIRM. Areas depicted in Yellow have been added to the flood plain. They were not found in the older FIRM data, but were added to the newer DFIRM. This map also shows the number of structures in each category. This map is not a legal document.

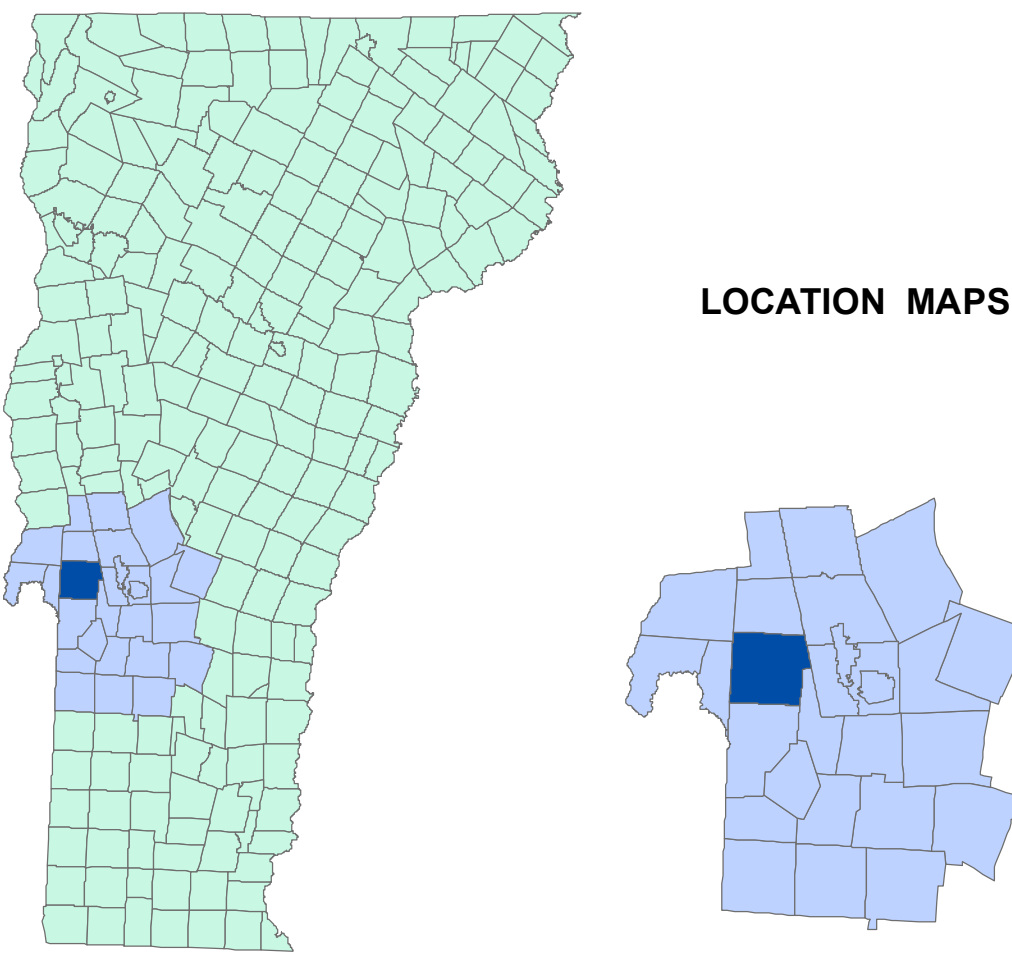
DIGITAL FLOOD INSURANCE RATE MAPS (DFIRMs)

The Federal Emergency Management Agency, (FEMA) in cooperation with the State Of Vermont, has compiled new Digital Flood Insurance Rate Maps (DFIRMs) for Rutland County. The DFIRM data is preliminary and is still under review by local officials. Rutland County had its public informational meeting on July 24, 2007, municipalities have ninety days to revise their maps as necessary. The new DFIRM format is GIS based and uses orthophotography as a base map. Also, map updates are now being created on a county-wide basis, not a town-wide basis. The existing Flood Insurance Rate Maps (FIRM), of various dates and scale, were digitized by RRPC. This map is for planning purposes only. It does not necessarily identify all areas subject to flooding, particularly those from small local sources, lakes and ponds. For more information, go to: http://www.vtwaterquality.org/rivers/htm/rv_floodhazard.htm, or visit FEMA's map modernization web site: http://www.fema.gov/plan/prevent/fhm/mm_main.htm.

Legend

- Structures added to flood plain
- Structures remained in flood plain
- Structures dropped from flood plain
- Rivers and Streams
- Lakes and Ponds

- Castleton Town parcel boundaries
 - Areas added to flood plain
 - Areas dropped from flood plain
 - Areas remained the same
- The number in parentheses is the number of structures in that category.



MAP INFORMATION

This map is designed to help municipalities review current FIRM data and new DFIRM data. All efforts have been made to use the most current available data at the time the map was produced. Parcel data was developed by Cartographic Associates, Inc. 2006. Surface water data is from the Vermont Center for Geographic Information, Inc. Vermont Hydrography Data set. The VHD data is a subset of the National Hydrography Data set. Orthophotography is from the National Agricultural Imagery Program (NAIP), 2006. Structure data points, developed by the State of VT E911 board, usually lie at the front of a structure, therefore: it is possible that a structure's point may lie outside of the floodplain, but the majority of the structure could lie within the flood plain. So, all structures and numbers derived from them are approximate.

